

**GARTEC**

**VIMEC AR:IA  
HOME CABIN  
LIFT**



Gartec was founded with a clear aim, to become the leader in platform lift solutions with a hassle-free experience, making buildings more accessible, opening up possibilities and options for users. One of our key objectives is to use our expertise and knowledge so that we can deliver exceptional service. The use of well-designed lift products has led us to shape the industry and become an award-winning business.



### **OUR PROMISE TO YOU**

With over 30 years history and industry knowledge we provide an easy experience, exceeding expectations every time. Our purpose is to provide the right solution to our customers, helping people to live better. Our reliability and consistency is what makes us a popular choice for platform lift products and we always look at ways to continuously improve to support our customers needs.



# ABOUT VIMEC AR:IA CABIN LIFT

Discover the AR:IA Cabin Lift – a home lift designed for accessibility and comfort. Its smooth, quiet operation ensures seamless integration into any home, offering a perfect balance between practicality and style. Perfect for anyone looking to future-proof their home.

## FEATURES AND SAFETY

Safety is a top priority, and the AR:IA Cabin Lift is designed to deliver complete peace of mind.

- **Emergency Systems:** In case of a power outage, AR:IA remains operational with a battery-powered lowering facility and an auto dialer for added safety.
- **Advanced Safety Features:** Emergency stop, overload sensors, and automatic door closing systems ensure that every ride is secure.
- **Certified European Standards:** AR:IA complies with the European Machinery Directive (2006/42/EC) safety regulations for home lifts, providing maximum protection for you and your family.

## MAIN BENEFITS

- **Advanced Home Lift Technology:** AR:IA introduces next-level innovation with intuitive controls and top-tier safety features, offering an effortless user experience every time.
- **Customizable Home Lift Design:** Tailor your home lift to suit your style. From cabin finishes to materials, AR:IA allows full personalization for a perfect fit in your home.
- **Sustainable Home Lift Solution:** Designed with energy efficiency in mind, using eco-friendly materials and minimizing energy consumption to reduce its environmental impact.
- **Flexible Upgrades:** Redesign your home lift's cabin walls anytime without needing to replace the entire system. AR:IA evolves with your home's changing design.





# FEATURES AND TECHNICAL DATA

## **ELECTRIC HOME LIFT**

Our electric home lift offers an eco-friendly, oil-free solution featuring advanced MRL (machine roomless) technology. This unique system requires no additional space beyond the shaft, making it a smart and efficient choice for your home.

## **SAFETY DEVICES AND BATTERIES**

Equipped with full-height photocell barriers and backup batteries, our lifts ensure you'll safely return to the landing and have doors open even during a power outage. These state-of-the-art safety features provide peace of mind for you and your family.

## **COMFORT AND SILENCE**

Experience smooth, controlled starts and stops thanks to the inverter technology. Our lifts are designed for comfort and quietness—with the motor positioning, a high-quality cabin structure, and carefully engineered door mechanisms that minimise vibrations and noise. Enjoy a smooth, silent ride every time.

## **UPGRADES**

Built to stand the test of time, our home lifts are designed for easy upgrades. Whether you want to refresh the finishes, replace parts, or enhance materials, you can do so without dismantling the entire system. This flexibility adds lasting value and allows for simple customisation, benefiting your whole family.

## **FAST INSTALLATION AND MAINTENANCE**

From packaging to pre-wiring, every step focuses on delivering a quality installation. For a two-stop lift installed in a masonry shaft, the process can be completed in under a week. Maintenance is straightforward and performed safely from inside the cabin. Safety features for technicians are installed both in the pit and top of cabin, setting a benchmark in the industry and helping reduce ongoing maintenance costs.



# TECHNICAL DETAILS

<b>Motor</b>	1,5kW (3kW heavy load version)
<b>Power Supply</b>	1ph 25A
<b>Load Capacity</b>	Up to 400kg
<b>Heavy Load Version Load Capacity</b>	Up to 450kg
<b>Speed</b>	Up to 0,15 m/s for smooth, safe travel
<b>Travel</b>	Max 14,6 m
<b>Number of Stops</b>	Up to 6 max
<b>Minimum Headroom (with swing door)</b>	2.450 mm
<b>Minimum Headroom (with on telescopic door)</b>	2.600 mm
<b>Pit Depth (with vinyl flooring)</b>	120 mm
<b>Pit Depth (with own flooring - 20 mm)</b>	140 mm
<b>Standard Cabin Height</b>	2.000 mm
<b>Entrance Confirmation</b>	Single, Through and Adjacent
<b>Doors Height</b>	2.000 mm
<b>Swing Doors</b>	Single or Double with infrared safety light curtain on cabin
<b>Telescopic Doors</b>	2, 3, 4 Stage fully automatic
<b>Compliance</b>	Directive 2006/42/EC "Machinery Directive Directive 2014/30/EU "Electromagnetic Compatibility
<b>Belt drive, for a smooth and soft movement</b>	
<b>"Soft Start/Stop" system</b>	
<b>Electrical safety locks</b>	
<b>One touch controls from landing and car (Constant pressure from inside car if swing doors)</b>	

\*All technical data are subject to change. Gartec reserves the right to modify specifications without prior notification.

## INSIDE THE CABIN

- Infrared light barriers on the entrance sides
- Auto dialer with 4G GSM, and battery backup power (EN 81-28)
- Emergency stop button
- Overload indicator
- Control buttons height according to EN 81-41
- Mirror (optional)
- Black handrail (optional)

# OPTIONS & ADDITIONS



## FLOOR OPTIONS



Black Studded  
Rubber



Anthracite  
Marmoleum



Cement  
Marmoleum



Green  
Marmoleum

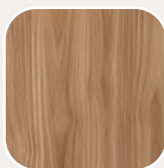


Beige  
Marmoleum

## INSIDE WALL OPTIONS



### Wood Effect



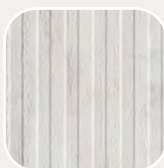
Okoko



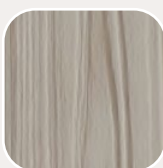
Tivoli



Ares



Riga



White Wood

### Steel



Satinised

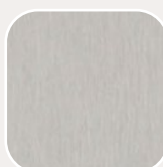


Lino Lucido

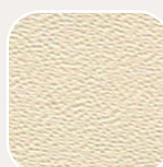
### Skinplate



Titanium



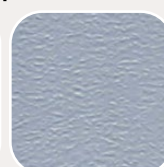
Similinox



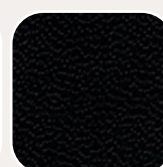
Ivory Touch



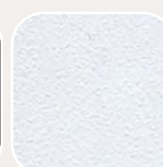
Green Forest



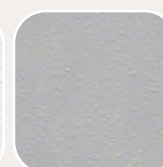
Cielo Pervinca



Deep Black



White Touch



Concrete Gray

### Skinplate



Coppery



Corten

### Metal Effect



Acier



Bronze



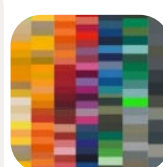
Manganese



Noir Sable



Pearl Beige



RAL

The ceiling panel is available with SKINPLATE, STEEL and RAL finishes.

Standard Sustainable Choice Touch Effect



A range of sustainable materials is available that can be used to enhance your home lift over the years.

## DOORS OPTIONS

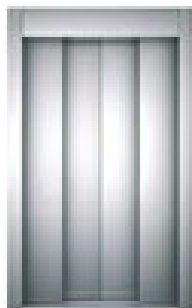
### Telescopic Options



2 Stage  
(side opening)



3 Stage  
(side opening)



4 Stage  
(central opening)



Glass with Frame



Full Glass

### Hinged Options



Steel



Steel with Small  
Window



Steel Panaramic



Steel Double Hinged



Aluminium  
Panoramic



# CABIN CONTROL PANEL



*"Gartec fitted a lift in my home earlier this year as part of renovations and an extension. I'm impressed with the lift which is really helping my mobility at home. Gartec were great to deal with and their engineers have been very helpful in making it work very well." JR*

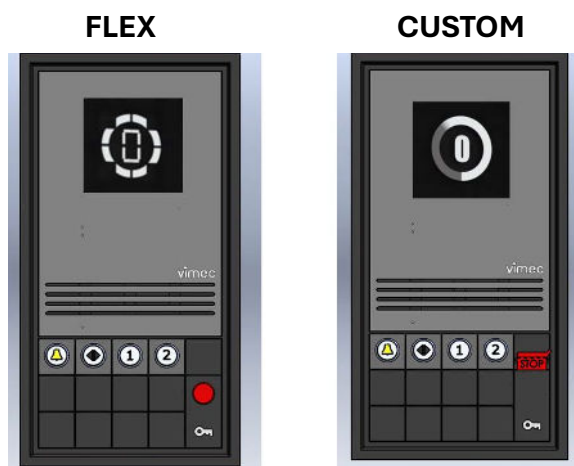


## CABIN OPERATING PANEL (COP)

The COP is crafted in a smooth matt black finish, subtly blending into the lift's interior. Measuring 300 mm by 565 mm, it is securely mounted onto the central removable wall panel, with a gentle 22 mm projection for easy access without being obtrusive.

**The keypad is designed with simplicity and ease in mind, featuring:**

- Grey round buttons
- Cabin display (LCD for FLEX – TFT for CUSTOM)
- Door opener button
- Alarm button



## OPTIONAL SMART ACCESS

For those seeking added control, an RFID reader is available as an optional extra. This allows lift activation via magnetic cards — ideal for controlled access in homes or shared spaces.

## COMFORT IN EVERY DETAIL

The mechanical buttons on the COP are round and grey, designed with a 38.2 mm diameter to blend seamlessly into the standard interior finish and offer a comfortable, intuitive user experience. The buttons feature blue backlighting, whereas the alarm button is illuminated with yellow backlighting. The bell and door opener buttons remain gently illuminated at all times, offering both guidance and peace of mind.







# MIRROR WALL OPTIONS

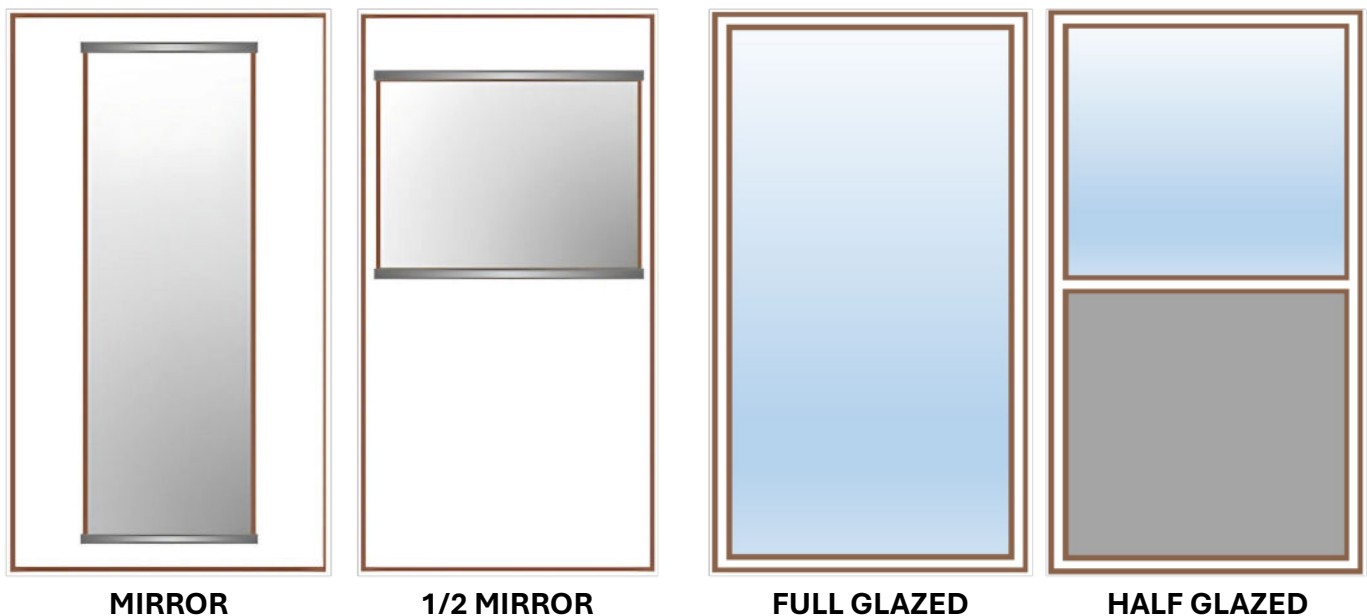
To enhance both the look and feel of your lift, you can choose to personalise the walls (excluding the side with the Control Operating Panel) with the following optional features:

## VERTICAL MIRROR

A sleek, full-length mirror can be installed in the centre of the wall – a simple addition that adds light, space and everyday convenience.

## GLAZED WALL – TRANSPARENT OR GREY TINTED

For a more open and airy feel, you can opt for a full glazed finish on one or two walls. The specially designed safety glass conforms to Class 1B1 standards (EN-12600) and the lift safety requirements of EN 81-41.



# LANDING PUSH BUTTON

The standard floor button panel is made from sturdy 34 mm plastic, designed with a clean, modern look. The Vimec logo is silk-screened as a subtle mark of quality.

A single round button offers simple, one-touch use—glowing green when the lift is available, and red when it's in use, so you always know its status at a glance. An optional LCD display can show the lift's position for added convenience.

Where Access Control is included, a key symbol on the panel shows that entry is available via magnetic card—offering security with ease.



# CEILING AND LIGHTING

- The ceiling can be finished to match the cabin walls for a clean, cohesive look (please note: plastic laminate is not available as a ceiling option).
- A mechanically interlocked trapdoor is integrated into the ceiling and can be safely removed from inside the cabin when essential maintenance is required. The dimensions of the hatch varies depending on the size of the cabin.
- LED strips are built into the cabin profiles and covered with a transparent polycarbonate diffuser, creating a gentle, ambient glow.
- Lighting options to suit your style includes:
  - ▶ **FLEX** configuration: Features two L-shaped LED strips for a clean, modern feel.
  - ▶ **CUSTOM** configuration: Includes three LED strips arranged in a Y-shape, offering enhanced illumination.
- In the event of a power failure, the lift remains gently lit, offering comfort in unexpected situations.

## LED STRIP CHARACTERISTICS

- Power Supply: 24V
- Length: 300 mm
- Temperature and color: 4000K (optional 2700K)
- Lumen: 800 lm/m





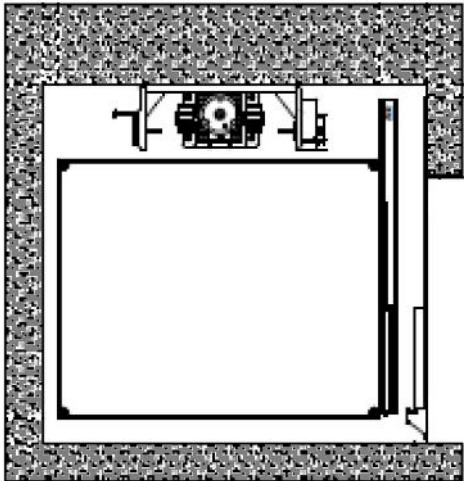
# HANDRAIL OPTION

For added comfort and support, a sleek matt black aluminium handrail can be included as an optional feature. Designed to complement the finish of the lift's cabin profiles, it blends seamlessly into the overall aesthetic. The handrail is fitted directly to the cabin structure and its length will depend on the wall space available. Where space allows, two handrails can be installed – one on each opposite wall – offering balanced support on both sides.

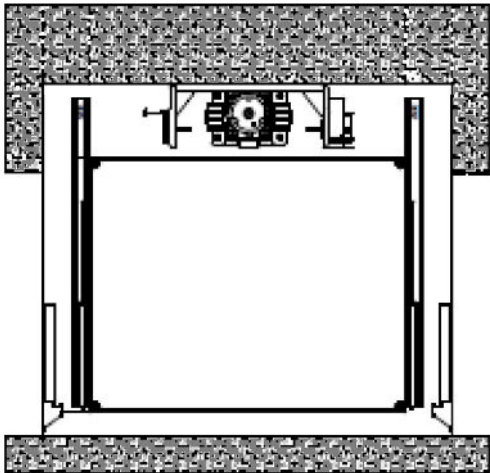


# DIMENSIONS AND OVERALL SPACE

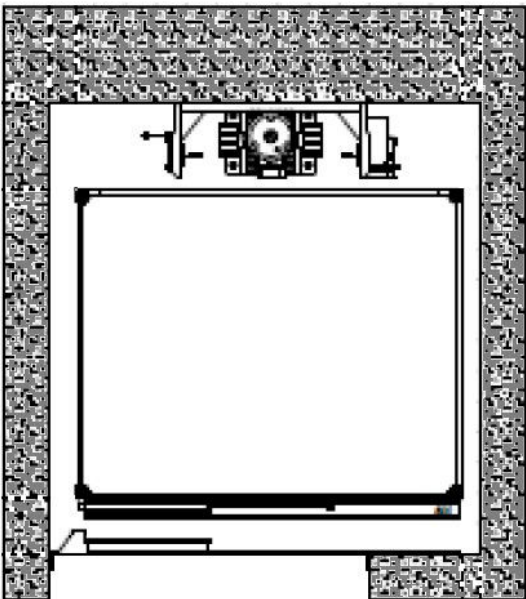
SINGLE ENTRANCE, ADJEACENT TO GUIDES



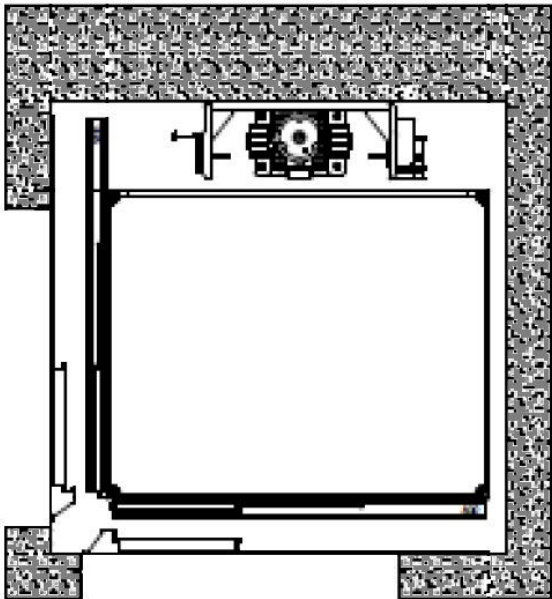
DOUBLE ENTRANCE, THROUGH CAR



SINGLE ENTRANCE, OPPOSITE GUIDES



DOUBLE ENTRANCE, ADJACENT



STANDARD CABIN SIZES		
810 mm x 900 mm	1000 mm x 1000 mm	1000 mm x 1250 mm
900 mm x 900 mm	1400 mm 1100 mm	900 mm x 1400 mm
1400 mm x 900 mm	1200 mm x 1200 mm	1140 mm x 1400 mm
900 mm x 1000 mm	810 mm x 1250 mm	(Bespoke sizes available)







**CONTACT US:**

01296 397100  
[sales@gartec.com](mailto:sales@gartec.com)  
[www.gartec.com](http://www.gartec.com)

**GARTEC**