



CASE STUDY

TAKING THE STRAIN OUT OF A PERIOD HOME (BRETBY HALL)

“There were 37 steps that came up to our apartment, and we used to have what we described as the worst five minutes of the week which was when we brought the shopping in,” says Richard Campbell as he describes the journey to his home at the 200-year-old Grade II listed Bretby Hall in Burton-On-Trent.

For Richard it was those 37 steps and multiple bags of shopping that made him and his wife rethink their daily living. They envisioned a renovated hallway with the addition of a lift at their heritage home that would take them to their top-floor apartment whenever they had something to move or carry.

“It was just very, very hard work and none of us are getting any younger,” Richard adds. “I’m still happy to use the stairs but we wanted a lift primarily for carrying and shifting.”

However, bringing their vision to life wasn’t without its challenges. Formerly the home of the Earl of Chesterfield and latterly a hospital before being converted into apartments in the early 2000s, Bretby Hall had all the quirky spaces and required building consents that period properties are known for. For Richard and his wife, and their neighbour whom they share the lift with, this included unusually shaped stairs and floor heights, meaning that installing a lift wasn’t a simple case of when, but how.

GARTEC

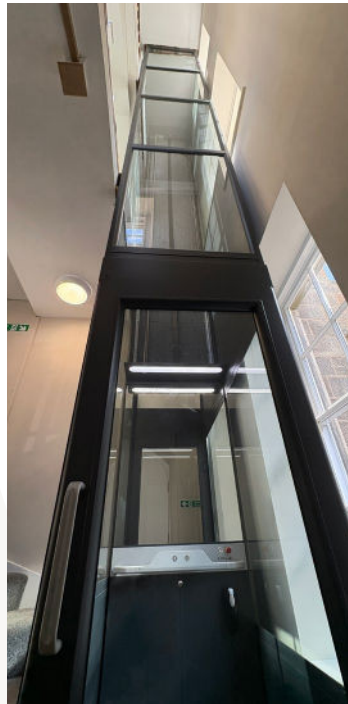


"We originally looked at having a tube lift, which would travel up through the central space of the stairs, but there just wasn't enough room so we spoke to an architect who suggested the best thing to do would be to rip the stairs out and start again," explains Richard. "We then looked at installing the most effective but narrowest staircase that we could fit, which determined what space we had for the lift."

"I spent a long time researching and trying to figure out what would fit. I was convinced from day one that we could do it, but it was a case of how we were going to achieve it."

Clear lift dimensions on Gartec's website and a comprehensive brochure meant that Richard was able to ascertain at the start of his research whether Gartec's range of lifts would be a good match for his project. Despite being turned down by other lift companies who said it wasn't possible, the Gartec team worked closely with Richard to achieve a solution that worked in his narrow space. They addressed challenges head-on, providing a workaround for the cabling that already existed below the lift's proposed base. A concrete box was fitted to cover the wiring, raise the lift and add a step-up entrance for passengers.

The Aritco HomeLift Compact was the lift of choice as its small dimensions are ideal where space is limited. As the project was complex and required co-ordination with several organisations including Historic England, South Derbyshire District Council, National Grid, builders and the stair fitters, Richard greatly appreciated the support the Gartec team provided both in and out of working hours.



MAKING THE IMPOSSIBLE POSSIBLE

Today, the lift has fulfilled the Campbell's brief bringing with it a satisfying level of convenience. It takes the strain out of all the heavy lifting and has finally enabled their neighbour to have her new kitchen, a project that tradespeople had previously refused as transporting the hardware up the stairs was too difficult. The couple can also invite more friends over, especially those who are older or have reduced mobility.

"At Gartec we like to approach any project with a fresh perspective," added Roger Hammond. "Our expert engineers have such a breadth of knowledge, and our wide range of lift options mean that we can help our clients achieve their vision, however challenging. I'm delighted that we were able to provide such a positive experience for Richard and his wife."

The Campbell's are not the only ones who are enjoying travelling in the lift. It has also had a surprising use that wasn't part of their original reasons for purchase - transport for their new puppy.

"For the first six months of her life our puppy wasn't supposed to go up and down stairs and as she got bigger it would have been harder and harder to carry her," explains Richard. "But using the lift is so natural to her now that she's learned a command that very few dogs have got which is 'in the lift' and she will get in the lift and sit and wait."

SPECIFICATION

Lift: [Aritco HomeLift Compact](#)

Bespoke features: Slightly raised lift with step up to entrance due to existing cabling under the lift position. Technical details: 1100 x 1480mm platform lift with automatic doors finished in white (RAL 9016)

Technical details: 1080mm platform, 2 stops, 6150mm travel, adjacent entrance with manual single swing glazed doors, glazed shaft enclosure and finished in anthracite grey.

Reason for purchase: Adaptation for ease of living



GARTEC

Phone: 01296 397100
Email: sales@gartec.com
www.gartec.com
Midshires Business Park · Unit 6 · Smeaton Close · Aylesbury HP19 8HL